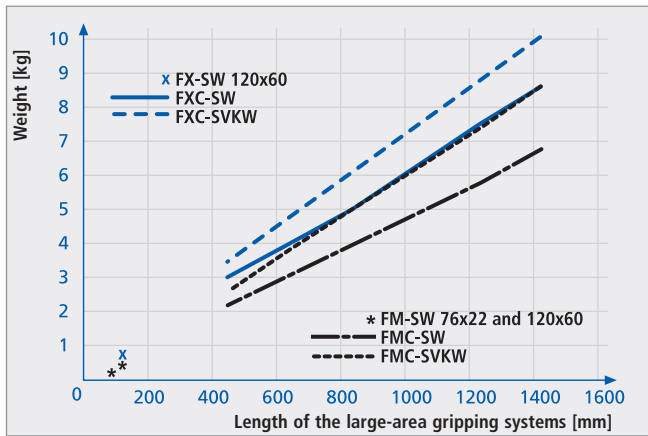


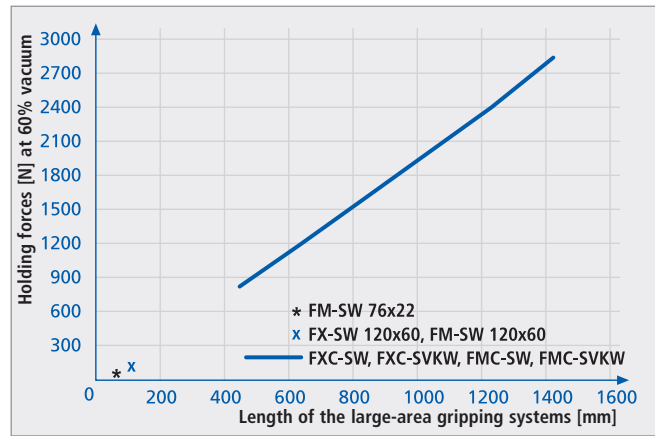
Large-area vacuum gripping systems FXC/FMC

Product specifications of FXC/FMC with sealing plate (foam)

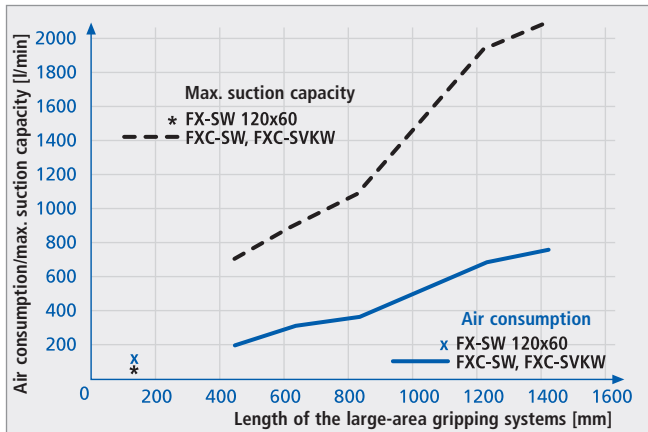
Technical data of large-area vacuum gripping systems FXC/FMC with sealing plate (foam)



Weight of the large-area vacuum gripping systems



Holding forces [N] at 60% vacuum and full coverage of the large-area vacuum gripping systems holding a rigid workpiece

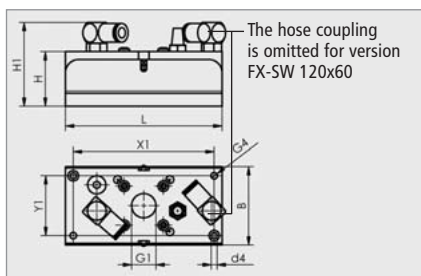


Air consumption and suction capacity of the large-area vacuum gripping system FX/FXC (FM/FMC can not be represented due to the external vacuum generator)

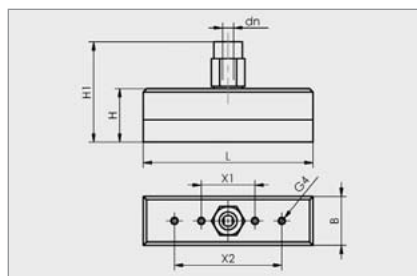
Type	Noise level [db (A)]	Max. evacuation level [%]
FXC	65	80
FMC	-*	-*

*FMC can not be represented due to the external vacuum generation

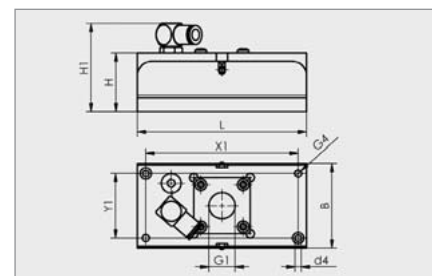
Construction data of the large-area vacuum gripping systems FX/FM with sealing plate (foam)



FX-SW 120x60 SEA



FM-SW 76x22



FM-SW 120x60

Type	Dimensions [mm]										
	B	d4	dn	G1	G4	H*	H1	L	X1	X2	Y1
FX-SW 120x60	60	4.5	-	G ¹ / ₂ "-IG	M6-IG	42	63	120	108	-	46
FX-SW 120x60 SEA**	60	4.5	-	G ¹ / ₂ "-IG	M6-IG	42	63	120	108	-	46
FM-SW 76x22	22	-	8	-	M3-IG	24	35	76	24	48	-
FM-SW 120x60	60	4.5	-	G ¹ / ₂ "-IG	M6-IG	42	63	120	108	-	46

*Other foam heights and foam types on request

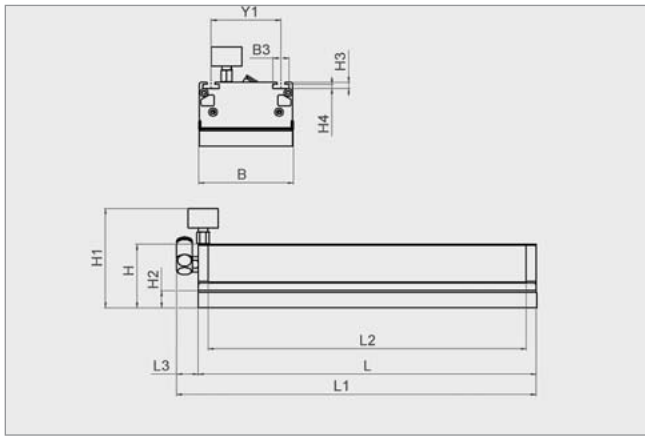
**Gripping systems with integrated blow-off piston for quick lowering of the workpiece

Note: Type FX requires compressed-air hose 8/6mm, type FM requires vacuum hose 8/6mm.

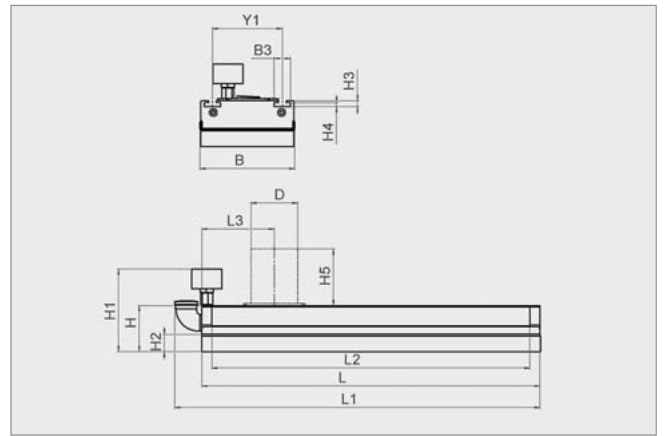
Large-area vacuum gripping systems FXC/FMC

Product specifications of FXC/FMC with sealing plate (foam)

Construction data of the large-area vacuum gripping systems FXC/FMC with sealing plate (foam)



FXC



FMC

Type	Dimensions [mm]													
	B	B3	D	H	H1	H2*	H3	H4	H5	L	L1	L2	L3	Y1
FXC-SW 435.5 18/36	122	21	-	82	128	22	7.7	5.2	-	435.5	462.5	409.5	27	90
FXC-SW 633.5 18/36	122	21	-	82	128	22	7.7	5.2	-	633.5	660.5	607.5	27	90
FXC-SW 831.5 18/36	122	21	-	82	128	22	7.7	5.2	-	831.5	858.5	805.5	27	90
FXC-SW 1227.5 18/36	122	21	-	82	128	22	7.7	5.2	-	1227.5	1281.5	1201.5	27	90
FXC-SW 1425.5 18/36	122	21	-	82	128	22	7.7	5.2	-	1425.5	1479.5	1399.5	27	90
FXC-SVKW 435.5 18/36	122	21	-	82	128	22	7.7	5.2	-	435.5	462.5	409.5	27	90
FXC-SVKW 633.5 18/36	122	21	-	82	128	22	7.7	5.2	-	633.5	660.5	607.5	27	90
FXC-SVKW 831.5 18/36	122	21	-	82	128	22	7.7	5.2	-	831.5	858.5	805.5	27	90
FXC-SVKW 1227.5 18/36	122	21	-	82	128	22	7.7	5.2	-	1227.5	1281.5	1201.5	27	90
FXC-SVKW 1425.5 18/36	122	21	-	82	128	22	7.7	5.2	-	1425.5	1479.5	1399.5	27	90
FMC-SW 435.5 18/36**	122	21	3/4"-IG	59	128	22	7.7	5.2	-	435.5	479.5	409.5	-	90
FMC-SW 633.5 18/36	122	21	1 1/4"-AG	59	128	22	7.7	5.2	36	633.5	633.5	607.5	-	90
FMC-SW 831.5 18/36	122	21	60	59	128	22	7.7	5.2	73	831.5	831.5	805.5	103	90
FMC-SW 1227.5 18/36	122	21	60	59	128	22	7.7	5.2	73	1227.5	1227.5	1201.5	103	90
FMC-SW 1425.5 18/36	122	21	60	59	128	22	7.7	5.2	73	1425.5	1425.5	1399.5	103	90
FMC-SVKW 435.5 18/36**	122	21	3/4"-IG	59	128	22	7.7	5.2	-	435.5	479.5	409.5	-	90
FMC-SVKW 633.5 18/36	122	21	1 1/4"-AG	59	128	22	7.7	5.2	36	633.5	633.5	607.5	-	90
FMC-SVKW 831.5 18/36	122	21	60	59	128	22	7.7	5.2	73	831.5	831.5	805.5	103	90
FMC-SVKW 1227.5 18/36	122	21	60	59	128	22	7.7	5.2	73	1227.5	1227.5	1201.5	103	90
FMC-SVKW 1425.5 18/36	122	21	60	59	128	22	7.7	5.2	73	1425.5	1425.5	1399.5	103	90

*Other foam heights and foam types on request

**With side connection piece

Note: Type FXC requires compressed-air hose 8/6mm, type FMC requires vacuum hose (dimension D). Customer-specific gripper solutions on request.